

PROTECT Guide Version 2.0

PART III

EDIFACT Message Implementation Guide Application Error and Acknowledgement message APERAK

Version: 2.0
Date: March 17, 2005

Author:
PROTECT Secretariat
Niek C. Waagmeester
tel: +31 6 2128 1702
email: WaagmeesterN@hetnet.nl

Table of content

1	MESSAGE PRINCIPLES	3
1.1	Functional definition	3
1.2	Message principles	3
2	DATA ATTRIBUTES	5
3	MESSAGE STRUCTURE	8
4	DATA SEGMENT SPECIFICATION	11
5	ANNEX – ERROR CODES	39

Document Version Control

Version	Date	Release note (and description of change)
0.5	October 1995	First formal release for implementation to reply to IFTDGN messages based on Directory D95A
1.0	January 1999	Updated release based on Directory D98B
1.1	July 16, 2002	Draft version for internal PROTECT use with extended functionality to reply to WASDIS messages Based on Directory D98B
2.0	May 3, 2004	New release for implementation, with extended functionality to reply to BERMAN messages based on Directory D2003A
2.0	March 17, 2005	Editorial changes (front page)

1 Message Principles

1.1 Functional definition

The functional definition of the APERAK message is as follows:

The function of this message is: a) to inform a message issuer that his message has been received by the addressee's application and has been rejected due to errors encountered during its processing in the application. b) to acknowledge to a message issuer the receipt of his message by the addressee's application.

1.2 Message principles

The following principles apply to the APERAK message:

1. A message may first have been controlled at system level (CONTRL) to detect syntax errors and to acknowledge its receipt. It is then transmitted to the application for processing.
The processing of the message in the application takes distinct steps towards validation/acceptance of the message contents.
2. The APERAK message is a message informing the sender of a message about the steps taken in processing his message in the recipients application.
If an error is detected at the application level, which prevents its complete processing, an APERAK message is sent to the original message sender giving details of the error(s) encountered.
An APERAK message can also be sent if no error has been detected and the validation of the message is completed and the message is accepted.
3. The steps in processing fall in the following basic categories that are reported to the sender of an IFTDGN, WASDIS or BERMAN message (the types of acknowledgement):
 - received message is rejected for processing by the receiving application
 - received message is accepted for processing by the application,
 - received message is conditionally accepted during processing by the receiving application (meaning that errors encountered are to be corrected)
 - received message is rejected during processing by the receiving application
 - received message is approved after processing by the receiving application
4. The APERAK message may be automatically or manually processed at recipient's discretion.
As most applications in the PROTECT environment will not be able to automatically process any errors reported it has been strongly recommended that in all ports both code and clear indication of the errors are contained in the message.

5. One APERAK message relates to one received message instance of a certain message type (e.g. in the PROTECT environment: one APERAK from the Port Authority relates to one received IFTDGN).
6. An APERAK reporting an error encountered in a certain consignment of an IFTDGN may contain the identification of the consignment (and may be also the identification of the goods item within that consignment) where the error was encountered. In this case the RFF segments in the application error segment group ERC is used to refer to the CNI and GID group in the IFTDGN.

An APERAK reporting an error encountered in a certain MARPOL Annex and MARPOL Annex Subdivision combination of a WASDIS may contain the identification of the combination. In this case the RFF segment in the application error segment group ERC is used to refer to the DGS group in the WASDIS.

7. The message does not cater for the provision of sending updates (change, deletion, etc.) to an APERAK message. Only the 'original' option is supported.
8. The message content is uniquely identified by means of the message reference (in BGM 1004) and the message sender identification (in NAD(MS) 3039).
9. The reference to the message to which the APERAK is the response (the message reference being answered to) is identified by the combination of:
 - the original message senders reference (qualified as previous message reference, in RFF(ACW) and
 - the original message sender (now being the recipient of the APERAK in NAD(MR) 3039) and
 - the message type that the APERAK is the answer to (e.g. Dangerous Goods Notification message IFTDGN).



2 Data attributes

Legend : M=mandatory, C=conditional, O=Optional, -=Not used

Entity	Data attribute	APE RAK	Mapping	Definition	Condition
Header info:					
	MESSAGE REFERENCE	M	BGM.1004	Reference number of the message instance assigned by the sender that must be unique for the sender within the message type and business application area.	
	MESSAGE REFERENCE ANSWERED TO PROCESSING DATE/TIME	M	DTM(137).2379	Date/time that the receiving application encounters the approval, rejection, conditional acceptance (error indication).	
	MESSAGE RECIPIENT ID	M	NAD(MR).3039		
	MESSAGE RECIPIENT NAME & ADDRESS, etc.	C	NAD(MR).3124 etc		
	MESSAGE SENDER CONTACT NAME	O	CTA in NAD	Name of the contact person or department of the message sender that may be contacted for information about and/or the errors reported is this message.	
	MESSAGE SENDER CONTACT PHONE/FAX	O	COM in NAD/CTA group		
	MESSAGE SENDER ID	M	NAD(MS).3029		
	MESSAGE SENDER NAME & ADDR, etc.	C	NAD(MS).3124 etc.		
	CONSIGNMENT REFERENCE FORWARDER	O	RFF(FF).1154	Reference number assigned to the consignment by the freight forwarder.	
	CONSIGNMENT REFERENCE OCEAN CARRIER AGENT	O	RFF(AAY).1154	Reference number assigned to the consignment by the ocean carrier's agent.	



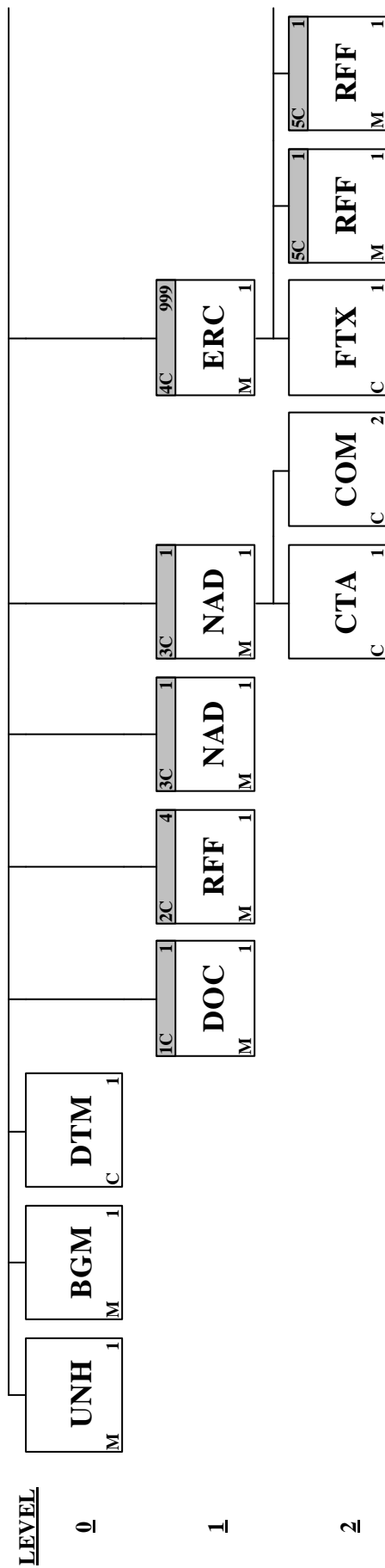
Entity	Data attribute	APE RAK	Mapping	Definition	Condition
	DGN SECURITY FILE REFERENCE	O	RFF(ALG).1154	Reference allocated by an authority in order to control the dangerous goods on board a specific means of transport for dangerous goods security purposes.	
	MAIN OCEAN SHIP'S STAY REFERENCE	O	RFF(ATZ).1153 in TDT group	Reference number assigned by the authority in the port to a certain call of the vessel in that port.	
Message replied to info:		M, 1			
	MESSAGE REFERENCE ANSWERED TO MESSAGE TYPE	M	DOC.1001	Code for the type of message that was received and for which this message contains the acknowledgement information.	
	MESSAGE REFERENCE ANSWERED TO	M	DOC.1004	The message reference of the message instance being answered to by this acknowledgment message, as it was completed in received the message (in [1004] in BGM).	
	MESSAGE REFERENCE ANSWERED TO ACKOWLEGDEMENT TYPE CODE	M	BGM.4343	Code for the type of acknowledgement that the message contains, e.g. the received message is accepted or rejected for processing, or is approved after processing or rejected during processing by the receiving application or errors are encountered that require correction.	
Error data:		O, 999			
	MESSAGE REFERENCE ANSWERED TO ERROR DESCR CODE	O	ERC.9321	Code for the type of error that was encountered in the message being processed.	
	MESSAGE REFERENCE ANSWERED TO ERROR DESCR TEXT	O	FTX(AAO).4440 in ERC group	Free text description of the type of error that was encountered in the message being processed.	

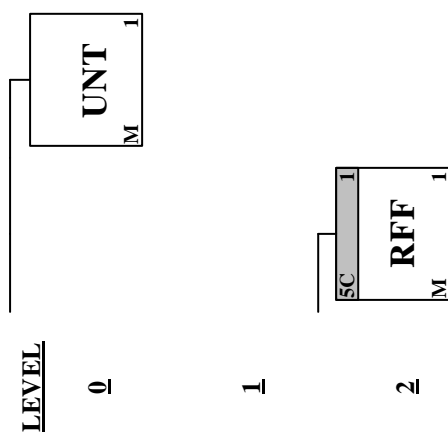


Entity	Data attribute	APE RAK	Mapping	Definition	Condition
	CONSIGNMENT ID SERIAL	C	RFF(CNI).1154 in ERC group	Serial number of the consignment, identifying each entry uniquely within the message. IN APARAK: To be completed with the value of the consignment id serial number in [1490] in CNI segment group to which the error indicated in the ERC segment applies.	May only be completed in case the Message type of the message answered to is IFTDGN.
	GOODS ID SERIAL	C	RFF(GID).1154 in ERC group	Serial number of the goods item within the consignment. In APERAK: To be completed with the value of the goods item number in [1496] in the GID segment group to which the error indicated in the ERC segment applies.	May only be completed in combination with the consignment id. serial number.
	WASTE HAZARD REGULATIONS MARPOL ANNEX	C	RFF(CNI).1154 in ERC group	Code indicating the Annex to MARPOL 73/78 as applicable to the specified waste (e.g. I, II, V). In APERAK: To be completed with the value of the data element [8351] in the DGS segment group to which the error indicated in the ERC segment applies.	May only be completed in case the Message type of the message answered to is WASDIS.
	WASTE HAZARD REGULATIONS MARPOL ANNEX SUBDIVISION CODED	C	RFF(CNI).1156 in ERC group	The code for the type of waste falling within the mentioned annex to MARPOL 73/78. In APERAK: To be completed with the value of the data element [8078] in the DGS segment group to which the error indicated in the ERC segment applies.	To be completed in combination with MARPOL Annex.

3 Message structure

<u>Page No.</u>	<u>Pos. No.</u>	<u>Seg. ID</u>	<u>Name</u>	<u>Base Status</u>	<u>User Status</u>	<u>Max. Use</u>	<u>Group Repeat</u>	<u>Notes and Comments</u>
11	0010	UNH	Message Header	M	M	1		
13	0020	BGM	Beginning of Message	M	M	1		
15	0030	DTM	Date/Time/Period	C	O	1		
	0060		Segment Group 1: DOC	C	R		1	
17	0070	DOC	Document/Message Details	M	M	1		
	0090		Segment Group 2: RFF	C	O		4	
20	0100	RFF	Reference	M	M	1		
	0120		Segment Group 3: NAD	C	R		1	
22	0130	NAD	Name and Address	M	M	1		
	0120		Segment Group 3: NAD-CTA-COM	C	R		1	
25	0130	NAD	Name and Address	M	M	1		
27	0140	CTA	Contact Information	C	O	1		
28	0150	COM	Communication Contact	C	O	2		
	0160		Segment Group 4: ERC-FTX-SG5	C	O		999	
30	0170	ERC	Application Error Information	M	M	1		
31	0180	FTX	Free Text	C	O	1		
	0190		Segment Group 5: RFF	C	O		1	
33	0200	RFF	Reference	M	M	1		
	0190		Segment Group 5: RFF	C	O		1	
35	0200	RFF	Reference	M	M	1		
	0190		Segment Group 5: RFF	C	O		1	
37	0200	RFF	Reference	M	M	1		
38	0220	UNT	Message Trailer	M	M	1		





4 Data segment specification

Segment: **UNH** Message Header

Position: 0010

Group:

Level: 0

Usage: Mandatory

Max Use: 1

Purpose: A service segment starting and uniquely identifying a message. The message type code for the Application error and acknowledgement message is APERAK.

Note: Application error and acknowledgement messages conforming to this document must contain the following data in segment UNH, composite S009:
 Data element 0065 APERAK 0052 D 0054 03A
 0051 UN

Dependency Notes:

Data Element Summary				
Data Element	Component Element	Name	Base Attributes	User Attributes
0062		MESSAGE REFERENCE NUMBER Unique message reference assigned by the sender. <i>This reference must be unique for the message occurrence regardless the message type and business application area.</i> <i>Data element [0062] must be identical in the UNH- and UNT-segment.</i>	M 1 an..14	M
S009		MESSAGE IDENTIFIER Identification of the type, version etc. of the message being interchanged.	M 1	M
	0065	Message type identifier Code identifying a type of message and assigned by its controlling agency. <i>APERAK Application error and acknowledgement message</i> <i>A code to identify the application error and acknowledgement message.</i>	M an..6	M
	0052	Message type version number Version number of a message type. <i>D Draft version/UN/EDIFACT Directory</i> <i>Message approved and issued as a draft message (Valid for directories published after March 1993 and prior to March 1997). Message approved as a standard message (Valid for directories published after March 1997).</i>	M an..3	M
	0054	Message type release number Release number within the current message type version number (0052). <i>03A Release 2003 - A</i> <i>Message approved and issued in the first 2003 release of the UNTDID (United Nations Trade Data Interchange Directory).</i>	M an..3	M
	0051	Controlling agency Code identifying the agency controlling the specification, maintenance and publication of the message type. <i>UN UN/ECE/TRADE/WP.4</i> <i>United Nations Centre for Trade Facilitation and Electronic Business (UN/CEFACT).</i>	M an..2	M
	0057	Association assigned code Code, assigned by the association responsible for the design and maintenance of the message type concerned, which further identifies the message. <i>PROT20 PROTECT Version 2.0</i>	C an..6	R
0068		COMMON ACCESS REFERENCE Reference serving as a key to relate all subsequent transfers of data to the same business case or file.	C 1 an..35	X

S010	STATUS OF THE TRANSFER	C	1	X
	Statement that the message is one in a sequence of transfers relating to the same topic.			
0070	Sequence message transfer number	M	n..2	X
	Number assigned by the sender indicating that the message is an addition or change of a previously sent message relating to the same topic.			
0073	First/last sequence message transfer indication	C	a1	X
	Indication used for the first and last message in a sequence of the same type of message relating to the same topic.			

Segment: **BGM** Beginning of Message
Position: 0020
Group:
Level: 0
Usage: Mandatory
Max Use: 1
Purpose: A segment to indicate the type and function of the message and to transmit the identifying number.

Dependency Notes:

Data Element Summary				
Data Element	Component Element	Name	Base Attributes	User Attributes
C002		DOCUMENT/MESSAGE NAME	C 1	R
		Identification of a type of document/message by code or name. Code preferred.		
	1001	Document name code	C an..3	R
		Code specifying the document name.		
		294 Application acknowledgement and error report A message used by an application to acknowledge reception of a message and/or to report any errors.		
	1131	Code list qualifier	C an..17	X
C106		Identification of a code list.		
	3055	Code list responsible agency, coded	C an..3	X
		Code identifying the agency responsible for a code list.		
	1000	Document name	C an..35	X
		Name of a document.		
		DOCUMENT/MESSAGE IDENTIFICATION	C 1	R
1225		Identification of a document/message by its number and eventually its version or revision.		
	1004	Document identifier	C an..35	R
		To identify a document.		
		MESSAGE REFERENCE M		
	1056	Version identifier	C an..9	X
		To identify a version.		
4343	1060	Revision identifier	C an..6	X
		To identify a revision.		
		MESSAGE FUNCTION CODE	C 1 an..3	R
		Code indicating the function of the message.		
		MESSAGE FUNCTION INDICATOR M		
		9 Original Initial transmission related to a given transaction.		
		RESPONSE TYPE CODE	C 1 an..3	R
		Code specifying the type of acknowledgment required or transmitted.		
		MESSAGE REFERENCE ANSWERED TO ACKOWLEGDEMENT TYPE CODE M		
		AP Accepted Indication that the referenced offer or transaction (e.g., cargo booking or quotation request) has been accepted. This code should be read as: indication that the referenced message is accepted/approved after completely being processed by the receiving application.		
		AQ Response expected The sender of the message expects a response. This code should be read as: Accepted for processing (new code) Indication that the referenced offer or transaction (e.g., cargo booking or quotation request) has been accepted for processing by the receiving application (e.g. when		

CA	<p><i>processing is pending).</i></p> <p><i>Conditionally accepted</i></p> <p><i>Indication that the referenced offer or transaction (e.g., cargo booking or quotation request) has been accepted under conditions indicated in this message.</i></p> <p><i>This code should be read as: indication that the referenced message will be accepted for further processing by the receiving application in case the referenced errors are corrected.</i></p>
RE	<p><i>Rejected</i></p> <p><i>Indication that the referenced offer or transaction (e.g., cargo booking or quotation request) is not accepted.</i></p> <p><i>This code should be read as: indication that the referenced message is rejected after completely or partially being processed by the receiving application.</i></p>
RP	<p><i>Rejected for processing (new code)</i></p> <p><i>Indication that the referenced offer or transaction (e.g., cargo booking or quotation request) has been rejected before it could actually being processed by the receiving application.</i></p>

Segment: **DTM** Date/Time/Period
Position: 0030
Group:
Level: 0
Usage: Conditional (Optional)
Max Use: 1
Purpose: A segment to specify related date/time.
Dependency Notes:

Data Element Summary

Data Element	Component Element	Name	Base Attributes	User Attributes
C507		DATE/TIME/PERIOD Date and/or time, or period relevant to the specified date/time/period type.	M 1	M
	2005	Date or time or period function code qualifier Code qualifying the function of a date, time or period. 137 <i>Document/message date/time</i> (2006) <i>Date/time when a document/message is issued. This may include authentication.</i>	M an..3	M
	2380	Date or time or period text The value of a date, a date and time, a time or of a period in a specified representation.	C an..35	R
		MESSAGE REFERENCE ANSWERED TO PROCESSING DATE/TIME		M
	2379	Date or time or period format code Code specifying the representation of a date, time or period. 203 <i>CCYYMMDDHHMM</i> <i>Calendar date including time with minutes: C=Century; Y=Year; M=Month; D=Day; H=Hour; M=Minutes.</i>	C an..3	R



Group: **DOC** **Segment Group 1: Document/Message Details**
Position: 0060
Group:
Level: 1
Usage: Conditional (Required)
Max Use: 1
Purpose: A segment group to provide information on the document being acknowledged.

Segment Summary

	Pos. <u>No.</u>	Seg. <u>ID</u>	<u>Name</u>	<u>Req. Des.</u>	<u>Max. Use</u>	<u>Group: Repeat</u>
M	0070	DOC	Document/Message Details	M	1	

Segment: **DOC** Document/Message Details
Position: 0070 (Trigger Segment)
Group: SG1
Level: 1
Usage: Mandatory
Max Use: 1
Purpose: A segment to provide the necessary identification information about the document being acknowledged.

Dependency Notes:

Data Element Summary				
Data Element	Component Element	Name	Base Attributes	User Attributes
C002	1001	DOCUMENT/MESSAGE NAME	M 1	M
		Identification of a type of document/message by code or name. Code preferred.		
		Document name code	C an..3	R
		Code specifying the document name.		
		Business Rules:		
		Variable Name: AnsweredToMessageType		
		<i>MESSAGE REFERENCE ANSWERED TO MESSAGE TYPE</i>		M
		185 <i>Conveyance declaration (arrival)</i>		
		<i>Declaration to the public authority upon arrival of the conveyance.</i>		
		186 <i>Conveyance declaration (departure)</i>		
		<i>Declaration to the public authority upon departure of the conveyance.</i>		
		298 <i>Dangerous goods list</i>		
		<i>Listing of all details of dangerous goods carried.</i>		
		<i>Message type IFTDGN, International Forwarding and Transport Dangerous Goods Notification message.</i>		
		318 <i>Application for shifting from the designated place in port</i>		
C503	1000	<i>Document to apply for shifting from the designated place in port.</i>		
		349 <i>Declaration regarding the inward and outward movement of vessel</i>		
		<i>Document to declare inward and outward movement of a vessel.</i>		
		470 <i>Waste disposal report</i>		
		<i>Document/message sent by a shipping agent to an authority for reporting information on waste disposal.</i>		
		482 <i>Port authority waste disposal report</i>		
		<i>Document/message sent by a port authority to another port authority for reporting information on waste disposal.</i>		
		Code list qualifier	C an..17	X
		Identification of a code list.		
		Code list responsible agency, coded	C an..3	X
		Code identifying the agency responsible for a code list.		
		Document name	C an..35	X
		Name of a document.		
		DOCUMENT/MESSAGE DETAILS	C 1	R
		Identification of document/message by number, status, source and/or language.		
C503	1004	Document identifier	C an..35	R
		To identify a document.		
		<i>MESSAGE REFERENCE ANSWERED TO</i>		M
		1373 Document status code	C an..3	X
C503	1366	Code specifying the status of a document.		
		Document source description	C an..70	X
		Free form description of the source of a document.		

3453	Language, coded Code of language (ISO 639-1988).	C	an..3	X
1056	Version identifier To identify a version.	C	an..9	X
1060	Revision identifier To identify a revision.	C	an..6	X
3153	COMMUNICATION MEDIUM TYPE CODE Code specifying the type of communication medium.	C	1 an..3	X
1220	DOCUMENT COPIES REQUIRED QUANTITY Quantity of document copies required.	C	1 n..2	X
1218	DOCUMENT ORIGINALS REQUIRED QUANTITY Quantity of document originals required.	C	1 n..2	X

Group: **RFF** Segment Group 2: Reference
Position: 0090
Group:
Level: 1
Usage: Conditional (Optional)
Max Use: 4
Purpose: A group of segments to specify the document/message to which the current message relates, and related date and time.

Segment Summary

	Pos. No.	Seg. ID	Name	Req. Des.	Max. Use	Group: Repeat
M	0100	RFF	Reference	M	1	

Segment: **RFF** Reference
Position: 0100 (Trigger Segment)
Group: SG2
Level: 1
Usage: Mandatory
Max Use: 1
Purpose: A segment to indicate the reference number of the document/message.
Dependency Notes:

Data Element Summary				
Data Element	Component Element	Name	Base Attributes	User Attributes
C506		REFERENCE Identification of a reference.	M 1	M
	1153	Reference code qualifier Code qualifying a reference. <div> <div>AA Y</div> <div>Carrier's agent reference number Reference number assigned by the carriers agent to a transaction.</div> </div> <div> <div>AL G</div> <div>Dangerous goods security number Reference number allocated by an authority in order to control the dangerous goods on board of a specific means of transport for dangerous goods security purposes.</div> </div> <div> <div>AT Z</div> <div>Ship's stay reference number Reference number assigned by a port authority to the stay of a vessel in the port.</div> </div> <div> <div>FF</div> <div>Freight forwarder's reference number [1460] Reference number assigned to the consignment by the freight forwarder.</div> </div>	M an..3	M
	1154	Reference identifier Identifies a reference. <div> <div>CONSIGNMENT REFERENCE FORWARDER</div> <div>O</div> </div> <div> <div>CONSIGNMENT REFERENCE OCEAN CARRIER AGENT</div> <div>O</div> </div> <div> <div>DGN SECURITY FILE REFERENCE</div> <div>O</div> </div> <div> <div>MAIN OCEAN SHIP'S STAY REFERENCE</div> <div>O</div> </div>	C an..70	R
	1156	Document line identifier To identify a line of a document.	C an..6	X
	4000	Reference version identifier To identify the version of a reference.	C an..35	X
	1060	Revision identifier To identify a revision.	C an..6	X

Group: **NAD** Segment Group 3: Name and Address
Position: 0120
Group:
Level: 1
Usage: Conditional (Required)
Max Use: 1
Purpose: A group of segments to specify the identifications of message sender and message receiver with their contacts and communication channels.

Segment Summary

	<u>Pos.</u> <u>No.</u>	<u>Seg.</u> <u>ID</u>	<u>Name</u>	<u>Req.</u> <u>Des.</u>	<u>Max.</u> <u>Use</u>	<u>Group:</u> <u>Repeat</u>
M	0130	NAD	Name and Address	M	1	

Segment: **NAD** Name and Address
Position: 0130 (Trigger Segment)
Group: SG3
Level: 1
Usage: Mandatory
Max Use: 1
Purpose: A segment to specify the identification of the message issuer and message receiver.

Dependency Notes:

Data Element Summary				
Data Element	Component Element	Name	Base Attributes	User Attributes
3035		PARTY FUNCTION CODE QUALIFIER Code giving specific meaning to a party. <i>MR Message recipient</i> <i>A party to receive a message or messages.</i>	M 1 an..3	M
C082		PARTY IDENTIFICATION DETAILS Identification of a transaction party by code.	C 1	R
	3039	Party identifier Code specifying the identity of a party. <i>MESSAGE RECIPIENT ID M</i>	C an..35	R
	1131	Code list qualifier Identification of a code list.	C an..17	X
	3055	Code list responsible agency, coded Code identifying the agency responsible for a code list.	C an..3	X
C058		NAME AND ADDRESS Unstructured name and address: one to five lines.	C 1	O
	3124	Name and address description Free form description of a name and address line. <i>MESSAGE RECIPIENT NAME & ADDRESS, etc. C</i>	M an..35	M
	3124	Name and address description Free form description of a name and address line.	C an..35	O
	3124	Name and address description Free form description of a name and address line.	C an..35	O
	3124	Name and address description Free form description of a name and address line.	C an..35	O
	3124	Name and address description Free form description of a name and address line.	C an..35	O
C080		PARTY NAME Identification of a transaction party by name, one to five lines. Party name may be formatted.	C 1	O
	3036	Party name Name of a party.	M an..35	M
	3036	Party name Name of a party.	C an..35	O
	3036	Party name Name of a party.	C an..35	O
	3036	Party name Name of a party.	C an..35	O
	3036	Party name Name of a party.	C an..35	O
	3045	Party name format code Code specifying the representation of a party name.	C an..3	O
C059		STREET Street address and/or PO Box number in a structured address: one to four lines.	C 1	O
	3042	Street and number or post office box identifier	M an..35	M

	To identify a street and number and/or Post Office box number.				
3042	Street and number or post office box identifier	C	an..35	O	
	To identify a street and number and/or Post Office box number.				
3042	Street and number or post office box identifier	C	an..35	O	
	To identify a street and number and/or Post Office box number.				
3042	Street and number or post office box identifier	C	an..35	O	
	To identify a street and number and/or Post Office box number.				
3164	CITY NAME	C	1 an..35	O	
	Name of a city.				
C819	COUNTRY SUB-ENTITY DETAILS	C	1	O	
	To specify a part of a country (eg county or part of a city).				
3229	Country sub-entity name code	C	an..9	O	
	Code specifying the name of a country sub-entity.				
1131	Code list qualifier	C	an..17	X	
	Identification of a code list.				
3055	Code list responsible agency, coded	C	an..3	X	
	Code identifying the agency responsible for a code list.				
3228	Country sub-entity name	C	an..70	X	
	Name of a country sub-entity.				
3251	POSTAL IDENTIFICATION CODE	C	1 an..17	O	
	Code specifying the postal zone or address.				
3207	COUNTRY, CODED	C	1 an..3	O	
	Identification of the name of the country or other geographical entity as defined in ISO 3166-1.				

Group: **NAD** Segment Group 3: Name and Address
Position: 0120
Group:
Level: 1
Usage: Conditional (Required)
Max Use: 1
Purpose: A group of segments to specify the identifications of message sender and message receiver with their contacts and communication channels.

Segment Summary

	<u>Pos.</u> <u>No.</u>	<u>Seg.</u> <u>ID</u>	<u>Name</u>	<u>Req.</u> <u>Des.</u>	<u>Max.</u> <u>Use</u>	<u>Group:</u> <u>Repeat</u>
M	0130	NAD	Name and Address	M	1	
O	0140	CTA	Contact Information	C	1	
O	0150	COM	Communication Contact	C	2	

Segment: **NAD** Name and Address
Position: 0130 (Trigger Segment)
Group: SG3
Level: 1
Usage: Mandatory
Max Use: 1
Purpose: A segment to specify the identification of the message issuer and message receiver.

Dependency Notes:

Data Element Summary				
Data Element	Component Element	Name	Base Attributes	User Attributes
3035		PARTY FUNCTION CODE QUALIFIER Code giving specific meaning to a party. <i>MS Document/message issuer/sender Issuer of a document and/or sender of a message.</i>	M 1 an..3	M
C082		PARTY IDENTIFICATION DETAILS Identification of a transaction party by code.	C 1	R
	3039	Party identifier Code specifying the identity of a party. <i>MESSAGE SENDER ID M</i>	C an..35	R
	1131	Code list qualifier Code identifying a user or association maintained code list.	C an..17	X
	3055	Code list responsible agency, coded Code specifying the agency responsible for a code list.	C an..3	X
C058		NAME AND ADDRESS Unstructured name and address: one to five lines.	C 1	O
	3124	Name and address description Free form description of a name and address line. <i>MESSAGE SENDER NAME & ADDR, etc. C</i>	M an..35	M
	3124	Name and address description Free form description of a name and address line.	C an..35	O
	3124	Name and address description Free form description of a name and address line.	C an..35	O
	3124	Name and address description Free form description of a name and address line.	C an..35	O
	3124	Name and address description Free form description of a name and address line.	C an..35	O
C080		PARTY NAME Identification of a transaction party by name, one to five lines. Party name may be formatted.	C 1	O
	3036	Party name Name of a party.	M an..35	M
	3036	Party name Name of a party.	C an..35	O
	3036	Party name Name of a party.	C an..35	O
	3036	Party name Name of a party.	C an..35	O
	3036	Party name Name of a party.	C an..35	O
	3045	Party name format code Code specifying the representation of a party name.	C an..3	O
C059		STREET Street address and/or PO Box number in a structured address: one to four lines.	C 1	O
	3042	Street and number or post office box identifier	M an..35	M

	To identify a street and number and/or Post Office box number.				
3042	Street and number or post office box identifier	C	an..35	O	
	To identify a street and number and/or Post Office box number.				
3042	Street and number or post office box identifier	C	an..35	O	
	To identify a street and number and/or Post Office box number.				
3042	Street and number or post office box identifier	C	an..35	O	
	To identify a street and number and/or Post Office box number.				
3164	CITY NAME	C	1 an..35	O	
	Name of a city.				
C819	COUNTRY SUB-ENTITY DETAILS	C	1	O	
	To specify a part of a country (eg county or part of a city).				
3229	Country sub-entity name code	C	an..9	O	
	Code specifying the name of a country sub-entity.				
1131	Code list qualifier	C	an..17	X	
	Code identifying a user or association maintained code list.				
3055	Code list responsible agency, coded	C	an..3	X	
	Code specifying the agency responsible for a code list.				
3228	Country sub-entity name	C	an..70	X	
	Name of a country sub-entity.				
3251	POSTAL IDENTIFICATION CODE	C	1 an..17	O	
	Code specifying the postal zone or address.				
3207	COUNTRY, CODED	C	1 an..3	O	
	Identification of the name of the country or other geographical entity as defined in ISO 3166-1.				

Segment: **CTA** **Contact Information**
Position: 0140
Group: SG3
Level: 2
Usage: Conditional (Optional)
Max Use: 1
Purpose: A segment to specify a person or department inside the party's organization, to which communication should be directed.

Dependency Notes:

Data Element Summary				
<u>Data Element</u>	<u>Component Element</u>	<u>Name</u>	<u>Base Attributes</u>	<u>User Attributes</u>
3139		CONTACT FUNCTION CODE Code specifying the function of a contact (e.g. department or person). <i>IC Information contact Department/person to contact for questions regarding transactions.</i>	C 1 an..3	R
C056		DEPARTMENT OR EMPLOYEE DETAILS Code and/or name of a department or employee. Code preferred.	C 1	R
	3413	Department or employee name code Code specifying the name of a department or employee.	C an..17	X
	3412	Department or employee name Name of a department or employee.	C an..35	O
		MESSAGE SENDER CONTACT NAME	O	

Segment: **COM** **Communication Contact**
Position: 0150
Group: SG3
Level: 2
Usage: Conditional (Optional)
Max Use: 2
Purpose: A segment to indicate communication channel type and number inside the party's organization, to which communication should be directed.

Dependency Notes:

Data Element Summary				
<u>Data Element</u>	<u>Component Element</u>	<u>Name</u>	<u>Base Attributes</u>	<u>User Attributes</u>
C076		COMMUNICATION CONTACT	M 3	M
		Communication number of a department or employee in a specified channel.		
	3148	Communication address identifier	M	an..512 M
		To identify a communication address.		
		MESSAGE SENDER CONTACT PHONE/FAX	O	
	3155	Communication address code qualifier	M	an..3 M
		Code qualifying the communication address.		
		FX <i>Telefax</i>		
				<i>Device used for transmitting and reproducing fixed graphic material (as printing) by means of signals over telephone lines or other electronic transmission media.</i>
		TE <i>Telephone</i>		
				<i>Voice/data transmission by telephone.</i>

Group: **ERC** **Segment Group 4: Application Error Information**
Position: 0160
Group:
Level: 1
Usage: Conditional (Optional)
Max Use: 999
Purpose: A group of segments to identify the application error(s) within a specified received message and to give specific details related to the error type or to precise the type of acknowledgement.

Segment Summary

	<u>Pos.</u> <u>No.</u>	<u>Seg.</u> <u>ID</u>	<u>Name</u>	<u>Req.</u> <u>Des.</u>	<u>Max.</u> <u>Use</u>	<u>Group:</u> <u>Repeat</u>
M	0170	ERC	Application Error Information	M	1	
O	0180	FTX	Free Text	C	1	
	0190		Segment Group 5: Reference	C		1
	0190		Segment Group 5: Reference	C		1
	0190		Segment Group 5: Reference	C		1

Segment: **ERC** Application Error Information
Position: 0170 (Trigger Segment)
Group: SG4
Level: 1
Usage: Mandatory
Max Use: 1
Purpose: A segment identifying the type of application error or acknowledgement within the referenced message. In case of an error, the error code may specify the error in detail (e.g. a measurement relating to a piece of equipment is wrong) or as a rough indication (e.g. a measurement is wrong).

Dependency Notes:

Data Element Summary				
<u>Data Element</u>	<u>Component Element</u>	<u>Name</u>	<u>Base Attributes</u>	<u>User Attributes</u>
C901		APPLICATION ERROR DETAIL Code assigned by the recipient of a message to indicate a data validation error condition.	M 1	M
	9321	Application error code Code specifying an application error. <i>MESSAGE REFERENCE ANSWERED TO ERROR DESCR CODE</i>	M an..8	M O
		* Note: Use codes values as specified in the Annex to this specification.		
	1131	Code list qualifier Identification of a code list.	C an..17	X
	3055	Code list responsible agency, coded Code identifying the agency responsible for a code list.	C an..3	X

Segment: **FTX** Free Text
Position: 0180
Group: SG4
Level: 2
Usage: Conditional (Optional)
Max Use: 1
Purpose: A segment to provide explanation and/or supplementary information related to the specified application error or acknowledgement. For example, the explanation may provide exact details relating to a generic error code.

Dependency Notes:

Data Element Summary					
Data Element	Component Element	Name	Base Attributes		User Attributes
4451		TEXT SUBJECT QUALIFIER Code specifying subject of a free text. AAO <i>Error description (free text)</i> <i>Error described by a free text.</i>	M	1 an..3	M
4453		TEXT FUNCTION, CODED Code specifying the purpose of the text.	C	1 an..3	X
C107		TEXT REFERENCE Coded reference to a standard text and its source.	C	1	X
	4441	Free text identification Free text in coded form.	M	an..17	X
	1131	Code list qualifier Identification of a code list.	C	an..17	X
	3055	Code list responsible agency, coded Code identifying the agency responsible for a code list.	C	an..3	X
C108		TEXT LITERAL Free text; one to five lines.	C	1	O
	4440	Free text Free text field available to the message sender for information.	M	an..512	M
		MESSAGE REFERENCE ANSWERED TO ERROR DESCR TEXT			O
	4440	Free text Free text field available to the message sender for information.	C	an..512	O
	4440	Free text Free text field available to the message sender for information.	C	an..512	O
	4440	Free text Free text field available to the message sender for information.	C	an..512	O
	4440	Free text Free text field available to the message sender for information.	C	an..512	O
3453		LANGUAGE, CODED Code of language (ISO 639-1988).	C	1 an..3	X
4447		TEXT FORMATTING, CODED Code specifying the formatting parameters for the text.	C	1 an..3	X

Group: **RFF** **Segment Group 5: Reference**
Position: 0190
Group: Segment Group 4 (Application Error Information) Conditional (Optional)
Level: 2
Usage: Conditional (Optional)
Max Use: 1
Purpose: A group of segments to specify the functional entity reference (e.g. goods item level, equipment level) relating to the specified error; further details can be added to identify the error more precisely.

Segment Summary						
	<u>Pos.</u> <u>No.</u>	<u>Seg.</u> <u>ID</u>	<u>Name</u>	<u>Req.</u> <u>Des.</u>	<u>Max.</u> <u>Use</u>	<u>Group:</u> <u>Repeat</u>
M	0200	RFF	Reference	M	1	

Segment: **RFF** Reference
Position: 0200 (Trigger Segment)
Group: SG4-SG5
Level: 2
Usage: Mandatory
Max Use: 1
Purpose: A segment to provide a reference relating to the acknowledgement type or the specified error (e.g. functional entity reference such as equipment level).

Dependency Notes:

Business Rules: 1. If AnsweredToMessageType NE 'DGN', then set Usage to 'Not Used'

Data Element Summary

Data Element	Component Element	Name	Base Attributes	User Attributes
C506		REFERENCE Identification of a reference.	M 1	M
	1153	Reference code qualifier Code qualifying a reference. Business Rules: Variable Name:ConsIDSerial CNI <i>Consignment information (*new code)</i> <i>Code identifying that the reference number given applies to the consignment information segment group CNI in the referred message.</i>	M an..3	M
	1154	Reference identifier Identifies a reference. CONSIGNMENT ID SERIAL C	C an..70	R
	1156	Document line identifier To identify a line of a document.	C an..6	X
	4000	Reference version identifier To identify the version of a reference.	C an..35	X
	1060	Revision identifier To identify a revision.	C an..6	X

Group: **RFF** **Segment Group 5: Reference**
Position: 0190
Group: Segment Group 4 (Application Error Information) Conditional (Optional)
Level: 2
Usage: Conditional (Optional)
Max Use: 1
Purpose: A group of segments to specify the functional entity reference (e.g. goods item level, equipment level) relating to the specified error; further details can be added to identify the error more precisely.

Segment Summary						
	<u>Pos.</u> <u>No.</u>	<u>Seg.</u> <u>ID</u>	<u>Name</u>	<u>Req.</u> <u>Des.</u>	<u>Max.</u> <u>Use</u>	<u>Group:</u> <u>Repeat</u>
M	0200	RFF	Reference	M	1	

Segment: **RFF** Reference
Position: 0200 (Trigger Segment)
Group: SG4-SG5
Level: 2
Usage: Mandatory
Max Use: 1
Purpose: A segment to provide a reference relating to the acknowledgement type or the specified error (e.g. functional entity reference such as equipment level).

Dependency Notes:

Business Rules: 1. If ConsIDSerial NE 'CNI', then set Usage to 'Not Used'

Data Element Summary

Data Element	Component Element	Name	Base Attributes	User Attributes
C506		REFERENCE Identification of a reference.	M 1	M
	1153	Reference code qualifier Code qualifying a reference. <i>GID Goods item information (*new code)</i>	M an..3	M
	1154	Reference identifier Identifies a reference. <i>GOODS ID SERIAL C</i>	C an..70	R
	1156	Document line identifier To identify a line of a document.	C an..6	X
	4000	Reference version identifier To identify the version of a reference.	C an..35	X
	1060	Revision identifier To identify a revision.	C an..6	X

Group: **RFF** **Segment Group 5: Reference**
Position: 0190
Group: Segment Group 4 (Application Error Information) Conditional (Optional)
Level: 2
Usage: Conditional (Optional)
Max Use: 1
Purpose: A group of segments to specify the functional entity reference (e.g. goods item level, equipment level) relating to the specified error; further details can be added to identify the error more precisely.

Segment Summary						
	<u>Pos.</u> <u>No.</u>	<u>Seg.</u> <u>ID</u>	<u>Name</u>	<u>Req.</u> <u>Des.</u>	<u>Max.</u> <u>Use</u>	<u>Group:</u> <u>Repeat</u>
M	0200	RFF	Reference	M	1	

Segment: **RFF** Reference
Position: 0200 (Trigger Segment)
Group: SG4-SG5
Level: 2
Usage: Mandatory
Max Use: 1
Purpose: A segment to provide a reference relating to the acknowledgement type or the specified error (e.g. functional entity reference such as equipment level).

Dependency Notes:

Business Rules: 1. If AnsweredToMessageType NE 'WAS', then set Usage to 'Not Used'

Data Element Summary

Data Element	Component Element	Name	Base Attributes	User Attributes
C506		REFERENCE Identification of a reference.	M 1	M
	1153	Reference code qualifier Code qualifying a reference. <i>DGS Dangerous Goods information [*new code]</i> <i>Code identifying that the reference number given applies to the dangerous goods information segment group DGS in the referred message.</i>	M an..3	M
	1154	Reference identifier Identifies a reference. <i>WASTE HAZARD REGULATIONS MARPOL ANNEX C</i>	C an..70	R
	1156	Document line identifier To identify a line of a document. <i>WASTE HAZARD REGULATIONS MARPOL ANNEX SUBDIVISION CODED C</i>	C an..6	R
	4000	Reference version identifier To identify the version of a reference.	C an..35	X
	1060	Revision identifier To identify a revision.	C an..6	X

Segment: **UNT** Message Trailer
Position: 0220
Group:
Level: 0
Usage: Mandatory
Max Use: 1
Purpose: A service segment ending a message, giving the total number of segments in the message (including the UNH & UNT) and the control reference number of the message.

Dependency Notes:

Data Element Summary				
<u>Data Element</u>	<u>Component Element</u>	<u>Name</u>	<u>Base Attributes</u>	<u>User Attributes</u>
0074		NUMBER OF SEGMENTS IN A MESSAGE Control count of number of segments in a message.	M 1 n..6	M
0062		MESSAGE REFERENCE NUMBER Unique message reference assigned by the sender.	M 1 an..14	M

5 Annex – Error codes

This annex contains the list of Error codes to be used in segment ERC, data element 9321 for data attribute: *MESSAGE REFERENCE ANSWERED TO ERROR DESCR CODE*.

The annex presents the PROTECT agreed code list; the codes values are numeric.

It is noted that for local implementations additional codes may be needed; it is agreed that local codes will be assigned alphanumeric values and the first character will be alphabetic (e.g. A12).

The error codes are presented in two tables. In the first table the code entries are sorted on Code description, in the other table the entries are sorted on Code value.

Also is indicated whether the code may used in reply to either a BERMAN or IFTDGN or WASDIS message. These indications serve as a guidance and are not intended to limit the use of codes.

Error codes - sorted on Code description

Code Value	Code description	- may be used in reply to message:	BER MAN	IFT DGN	WAS DIS
202	Agent not known			I	
153	Available landing space not sufficient		B		
356	Berth code invalid		B	I	W
355	Berth code not indicated		B	I	
358	Berth code or terminal code invalid			I	
158	Berth From equal to Berth To		B		
161	Berth From not equal to previous Berth (To) location		B		
21	Berth From not indicated		B		
19	Berth From unknown (code and/or text)		B		
150	Berth not allowed or Vessel length too long		B		
155	Berth not available		B		
20	Berth Planned unknown (code and/or text)		B		
30	Berth request type (BGM.1001) invalid		B		
31	Berth request type (BGM.1001) out of sequence		B		
22	Berth To (Next Berth) not indicated		B		
23	Berth To (Next Berth) unknown (code and/or text)		B		
25	Berth unknown (code and/or text)		B		
128	Cancellation not allowed: already activated by VTS		B	I	W
130	Cancellation not allowed: ship is arriving		B	I	W
131	Cancellation not allowed: ship is moored		B	I	W
135	Carrier agent contact name invalid or not indicated		B	I	
136	Carrier agent ID invalid		B	I	
137	Carrier agent NAD details invalid or not indicated		B	I	W
138	Carrier agent not authorised		B	I	W
139	Carrier ID SCAC code invalid or not indicated		B	I	
140	Carrier NAD details invalid or not indicated		B		
119	CNI-number has already been used in this notification			I	
156	Combination invalid: Draft/Length ratio of vessel		B		
222	Combination invalid: IMDG class versus UN number			I	
225	Combination invalid: Lloyd's Register number versus Radio Call Sign		B	D	W
232	Combination invalid: MARPOL Annex Code versus MARPOL Annex Subdivision				W
233	Combination invalid: Vessel's call reference versus Vessel identification		B	I	W
27	Consignee not indicated			I	
220	Dangerous goods technical name not indicated			I	
236	Dangerous/hazardous goods on board and/or Manifest on board indicator invalid or not indicated		B		
400	Date arrival pre-carriage has to be indicated or is not valid			I	
402	Date arrival pre-carriage/date departure on-carriage: invalid or not indicated			I	
401	Date departure on-carriage has to be indicated or is not valid			I	
352	Date of operation (discharge) not indicated			I	
351	Date of operation (load) not indicated			I	
376	Date of operation is after the date of on-carriage			I	
377	Date of operation is before the date of pre-carriage			I	
375	Date of operation is invalid/outside the period of stay			I	
350	Date of operation: not indicated or not valid			I	
353	Date of Registry invalid		B		

Code Value	Code description	- may be used in reply to message:	BER MAN	IFT DGN	WAS DIS
378	Date on-carriage is before arrival of pre-carriage means of transport			I	
379	Date pre-carriage is after departure of on-carriage means of transport			I	
381	Date/time last waste discharge invalid				W
382	Date/time of Message invalid		B	I	W
383	Date/time of vessel's last waste discharge invalid				W
384	Date/time vessel's waste discharge in port of call invalid				W
207	Declaring party not indicated			I	
201	Declaring party not known			I	
209	Declaring party: only 1 declaring party authorised			I	
152	Depth of water insufficient		B		
112	Duplicate message reference (BGM.1004)			I	
114	Duplicate notification/request for vessel		B	D	W
600	Equipment identification invalid (EQD versus SGP do not match)			I	
407	ETA greater than current local time (System time)		B	D	W
408	ETA main carriage in Port of call invalid or not indicated		B	D	W
409	ETA main-carriage at Berth To (Next Berth) invalid or not indicated		B		
411	ETA main-carriage greater than ETD		B	D	W
405	ETA main-carriage on berth invalid or not indicated		B	I	
370	ETA of referenced party not valid			I	
406	ETD main-carriage on berth invalid or not indicated		B	I	
372	ETD of referenced party not valid		B	I	
373	ETD on-carriage invalid or not indicated		B	I	
226	Flashpoint invalid or not indicated			I	
203	Forwarder not known			I	
253	Goods gross weight invalid or not indicated (incl.unit of measure invalid or not indicated)			I	
250	Goods item number has already been used in this consignment			I	
265	Goods net explosive weight invalid or not indicated (incl.unit of measure invalid or not indicated)			I	
261	Goods net weight invalid or not indicated (incl.unit of measure invalid or not indicated)			I	
262	Goods radioactive criticality index invalid or not indicated (incl.unit of measure invalid or not indicated)			I	
263	Goods radioactive index of transport invalid or not indicated (incl.unit of measure invalid or not indicated)			I	
264	Goods radioactivity invalid or not indicated (incl.unit of measure invalid or not indicated)			I	
304	Handling instruction code invalid			I	
305	Handling instruction not valid for declaring party			I	
234	Handling not permitted at indicated berth / warehouse			I	
221	IMDG class not known			I	
341	Lloyd's number not indicated		B	I	W
340	Lloyd's number not valid		B	I	W
505	Location identification code warehouse not valid			I	
506	Location identification, name/address warehouse not indicated			I	
520	MARPOL Annex code invalid				W
521	MARPOL Annex Subdivision code invalid				W
311	Message change remarks code invalid		B	I	
310	Message change remarks text not indicated		B	I	

Code Value	Code description	- may be used in reply to message:	BER MAN	IFT DGN	WAS DIS
113	Message function indicator invalid		B	I	W
116	Message identifier data invalid (UNH.S009)		B	I	W
132	Message recipient ID invalid		B	I	W
133	Message reference invalid or not indicated		B	D	W
142	Message reference of previous message invalid (unknown)		B	I	W
143	Message sender ID invalid		B	I	W
144	Message sender NAD details invalid or not indicated		B	I	W
165	Message sequence invalid (value message function indicator in BGM.1225 not expected)		B	I	W
170	Mismatch Lloyd's Register Number versus previous Lloyd's Register number		B	D	W
171	Mismatch Lloyd's Register Number versus previous Lloyd's Register number		B	D	W
172	Mismatch Vessel characteristics in message versus PA database				W
321	Mode of transport invalid or not indicated		B	I	W
322	Mode of transport not allowed (e.g. for declaring agent)			I	
323	Mooring info text code invalid		B		
345	Name of means of transport not indicated			I	
229	Net weight invalid or not indicated (incl.unit of measure invalid or not indicated)			I	
415	Notification/request submitted too early		B		
416	Notification/request submitted too late		B	I	
420	Notify party not indicated			I	
425	Number of crew on board invalid		B		
426	Number of packages not indicated			I	
427	Number of people on board invalid		B		
428	Number of pilots required invalid		B		
429	Number of towage vessel required invalid		B		
440	Overlapping vessel's call encountered		B		
224	Page number IMDG code: format invalid			I	
395	Party identification: not indicated/valid		B	I	W
300	Party qualifier code invalid			I	
450	Pilotage exemption number invalid		B		
455	Port by-laws not followed			I	
460	Port of call entry point code invalid		B		
461	Port of call exit point code invalid		B		
462	Port of discharge not indicated			I	
463	Port of loading not indicated			I	
470	Port services requested code invalid		B		
115	Previous message not received		B	I	W
475	Previous message still pending		B	D	W
231	Quantity limitation exceeded			I	
330	Radio Call Sign of vessel invalid or not indicated		B	I	W
331	Radio Call Sign of vessel not valid		B	I	W
380	Radio Call Sign or ETA and ETD have to be indicated		B	I	
366	Reference to agent not indicated			I	
367	Reference to agent not valid			I	
360	Reference to freight forwarder not indicated			I	
361	Reference to freight forwarder not valid			I	
317	Reference to previous message not valid		B	I	

Code Value	Code description	- may be used in reply to message:	BER MAN	IFT DGN	WAS DIS
480	Request rejected by Port Authority		B	D	W
481	Requested priority for passing lock invalid		B		
482	Requested priority for passing lock issued too late		B		
483	Requested priority for passing lock not possible		B		
485	Security file number of Dangerous goods: not indicated			I	
486	Security file number of Dangerous goods: not valid			I	
487	Security level at previous port facility invalid		B		
488	Security level invalid		B		
489	Security procedures followed indicator invalid		B		
493	Security: ISPS Code information missing		B		
490	Security: ISSC issuing authority code invalid		B		
491	Security: ISSC issuing authority NAD details invalid or not indicated		B		
492	Security: ISSC on board code and/or Capable to execute ISPS Code indicator invalid		B		
535	Service requirement code (TSR.7273) invalid		B		
540	Shipper not indicated			I	
541	Shipping line/Regular service (SCAC code) invalid or not indicated		B	I	
546	Ship's stay reference (Call reference) in port of call not indicated		B		
545	Ship's stay reference (Call reference) number invalid		B	I	
357	Terminal code invalid			I	
531	Transport license for explosives not indicated			I	
326	Transport stage qualifier invalid or not indicated		B	I	W
103	Tried to add detail to closed notification			I	
100	Tried to add detail to unknown notification			I	
111	Tried to cancel closed notification/message		B	I	W
110	Tried to cancel unknown notification/message		B	I	W
108	Tried to change closed notification/message		B	I	W
121	Tried to change deleted detail			I	
104	Tried to change detail section in closed notification			I	
101	Tried to change detail section in unknown notification			I	
106	Tried to change heading section of unknown notification			I	
120	Tried to change unknown detail			I	
107	Tried to create notification with duplicate identification			I	
123	Tried to delete deleted detail			I	
105	Tried to delete detail from closed notification			I	
102	Tried to delete detail from unknown notification			I	
124	Tried to delete last remaining detail			I	
122	Tried to delete unknown detail			I	
126	Tried to replace closed notification/message		B	I	W
125	Tried to replace unknown notification/message		B	I	W
550	Type of berth not appropriate for type of vessel		B		
551	Type of call (purpose of call) at berth code invalid		B		
228	Type of package not indicated or invalid			I	
555	UN Number (UNDG number) invalid			I	
227	UN number or page number IMDG-code : not indicated			I	
561	UNLOCODE Inspection place waste last invalid				W
562	UNLOCODE Place of Registry invalid		B		
563	UNLOCODE Port of call invalid		B		
565	UNLOCODE Port of call next invalid		B		

Code Value	Code description	- may be used in reply to message:	BER MAN	IFT DGN	WAS DIS
567	UNLOCODE Port of call previous invalid		B		
568	UNLOCODE Port of Delivery of waste remainder invalid				W
577	UNLOCODE Port of destination invalid		B		
570	UNLOCODE Port of discharge invalid			I	
572	UNLOCODE Port of discharge of waste invalid				W
574	UNLOCODE Port of loading invalid			I	
575	UNLOCODE Port of loading pre-carriage invalid			I	
576	UNLOCODE Port of origin invalid		B		
614	Vessel deadweight invalid or not indicated (incl.unit of measure invalid or not indicated)		B		
591	Vessel defect code invalid		B		
235	Vessel does not come to port		B		
592	Vessel draft actual for and/or aft invalid or not indicated		B		
594	Vessel falls within boycott regime		B		
615	Vessel length overall invalid or not indicated invalid or not indicated (incl. unit of measure invalid or not indicated)		B		
597	Vessel master name invalid or not indicated		B		
598	Vessel name invalid				
599	Vessel nationality invalid or not indicated		B	I	W
610	Vessel owner agent contact name invalid or not indicated		B		
611	Vessel owner agent NAD details invalid or not indicated		B		
613	Vessel tonnage gross invalid or not indicated (incl.unit of measure invalid or not indicated)		B		
620	Vessel type code invalid		B		
616	Vessel width maximum invalid or not indicated invalid or not indicated (incl. unit of measure invalid or not indicated)		B		
630	Vessel's call canceled		B		
631	Vessel's call closed		B	I	W
635	Voyage number not indicated		B		
650	Waste collector ID invalid				W
651	Waste report exemption indication invalid or not indicated				W
652	Waste report message info code (BGM.1001) invalid				W
653	Waste specification text invalid or not appropriate				W
654	Waste volume on board invalid or not indicated (incl. unit of measure invalid or not indicated)				W
655	Waste volume storage capacity invalid or not indicated (incl. unit of measure invalid or not indicated)				W
656	Waste volume to be delivered invalid or not indicated (incl. unit of measure invalid or not indicated)				W
657	Waste volume to be generated invalid or not indicated (incl. unit of measure invalid or not indicated)				W
658	Waste volume to remain on board invalid or not indicated (incl. unit of measure invalid or not indicated)				W

Error codes - sorted on Code value

Code Value	Code description	- may be used in reply to message:	BER MAN	IFT DGN	WAS DIS
19	Berth From unknown (code and/or text)		B		
20	Berth Planned unknown (code and/or text)		B		
21	Berth From not indicated		B		
22	Berth To (Next Berth) not indicated		B		
23	Berth To (Next Berth) unknown (code and/or text)		B		
25	Berth unknown (code and/or text)		B		
27	Consignee not indicated			I	
30	Berth request type (BGM.1001) invalid		B		
31	Berth request type (BGM.1001) out of sequence		B		
100	Tried to add detail to unknown notification			I	
101	Tried to change detail section in unknown notification			I	
102	Tried to delete detail from unknown notification			I	
103	Tried to add detail to closed notification			I	
104	Tried to change detail section in closed notification			I	
105	Tried to delete detail from closed notification			I	
106	Tried to change heading section of unknown notification			I	
107	Tried to create notification with duplicate identification			I	
108	Tried to change closed notification/message		B	I	W
110	Tried to cancel unknown notification/message		B	I	W
111	Tried to cancel closed notification/message		B	I	W
112	Duplicate message reference (BGM.1004)			I	
113	Message function indicator invalid		B	I	W
114	Duplicate notification/request for vessel		B	D	W
115	Previous message not received		B	I	W
116	Message identifier data invalid (UNH.S009)		B	I	W
119	CNI-number has already been used in this notification			I	
120	Tried to change unknown detail			I	
121	Tried to change deleted detail			I	
122	Tried to delete unknown detail			I	
123	Tried to delete deleted detail			I	
124	Tried to delete last remaining detail			I	
125	Tried to replace unknown notification/message		B	I	W
126	Tried to replace closed notification/message		B	I	W
128	Cancellation not allowed: already activated by VTS		B	I	W
130	Cancellation not allowed: ship is arriving		B	I	W
131	Cancellation not allowed: ship is moored		B	I	W
132	Message recipient ID invalid		B	I	W
133	Message reference invalid or not indicated		B	D	W
135	Carrier agent contact name invalid or not indicated		B	I	
136	Carrier agent ID invalid		B	I	
137	Carrier agent NAD details invalid or not indicated		B	I	W
138	Carrier agent not authorised		B	I	W
139	Carrier ID SCAC code invalid or not indicated		B	I	
140	Carrier NAD details invalid or not indicated		B		
142	Message reference of previous message invalid (unknown)		B	I	W
143	Message sender ID invalid		B	I	W

Code Value	Code description	- may be used in reply to message:	BER MAN	IFT DGN	WAS DIS
144	Message sender NAD details invalid or not indicated		B	I	W
150	Berth not allowed or Vessel length too long		B		
152	Depth of water insufficient		B		
153	Available landing space not sufficient		B		
155	Berth not available		B		
156	Combination invalid: Draft/Length ratio of vessel		B		
158	Berth From equal to Berth To		B		
161	Berth From not equal to previous Berth (To) location		B		
165	Message sequence invalid (value message function indicator in BGM.1225 not expected)		B	I	W
170	Mismatch Lloyd's Register Number versus previous Lloyd's Register number		B	D	W
171	Mismatch Lloyd's Register Number versus previous Lloyd's Register number		B	D	W
172	Mismatch Vessel characteristics in message versus PA database				W
201	Declaring party not known			I	
202	Agent not known			I	
203	Forwarder not known			I	
207	Declaring party not indicated			I	
209	Declaring party: only 1 declaring party authorised			I	
220	Dangerous goods technical name not indicated			I	
221	IMDG class not known			I	
222	Combination invalid: IMDG class versus UN number			I	
224	Page number IMDG code: format invalid			I	
225	Combination invalid: Lloyd's Register number versus Radio Call Sign		B	D	W
226	Flashpoint invalid or not indicated			I	
227	UN number or page number IMDG-code : not indicated			I	
228	Type of package not indicated or invalid			I	
229	Net weight invalid or not indicated (incl.unit of measure invalid or not indicated)			I	
231	Quantity limitation exceeded			I	
232	Combination invalid: MARPOL Annex Code versus MARPOL Annex Subdivision				W
233	Combination invalid: Vessel's call reference versus Vessel identification		B	I	W
234	Handling not permitted at indicated berth / warehouse			I	
235	Vessel does not come to port		B		
236	Dangerous/hazardous goods on board and/or Manifest on board indicator invalid or not indicated		B		
250	Goods item number has already been used in this consignment			I	
253	Goods gross weight invalid or not indicated (incl.unit of measure invalid or not indicated)			I	
261	Goods net weight invalid or not indicated (incl.unit of measure invalid or not indicated)			I	
262	Goods radioactive criticality index invalid or not indicated (incl.unit of measure invalid or not indicated)			I	
263	Goods radioactive index of transport invalid or not indicated (incl.unit of measure invalid or not indicated)			I	
264	Goods radioactivity invalid or not indicated (incl.unit of measure invalid or not indicated)			I	
265	Goods net explosive weight invalid or not indicated (incl.unit of measure invalid or not indicated)			I	

Code Value	Code description	- may be used in reply to message:	BER MAN	IFT DGN	WAS DIS
300	Party qualifier code invalid			I	
304	Handling instruction code invalid			I	
305	Handling instruction not valid for declaring party			I	
310	Message change remarks text not indicated		B	I	
311	Message change remarks code invalid		B	I	
317	Reference to previous message not valid		B	I	
321	Mode of transport invalid or not indicated		B	I	W
322	Mode of transport not allowed (e.g. for declaring agent)			I	
323	Mooring info text code invalid		B		
326	Transport stage qualifier invalid or not indicated		B	I	W
330	Radio Call Sign of vessel invalid or not indicated		B	I	W
331	Radio Call Sign of vessel not valid		B	I	W
340	Lloyd's number not valid		B	I	W
341	Lloyd's number not indicated		B	I	W
345	Name of means of transport not indicated			I	
350	Date of operation: not indicated or not valid			I	
351	Date of operation (load) not indicated			I	
352	Date of operation (discharge) not indicated			I	
353	Date of Registry invalid		B		
355	Berth code not indicated		B	I	
356	Berth code invalid		B	I	W
357	Terminal code invalid			I	
358	Berth code or terminal code invalid			I	
360	Reference to freight forwarder not indicated			I	
361	Reference to freight forwarder not valid			I	
366	Reference to agent not indicated			I	
367	Reference to agent not valid			I	
370	ETA of referenced party not valid			I	
372	ETD of referenced party not valid		B	I	
373	ETD on-carriage invalid or not indicated		B	I	
375	Date of operation is invalid/outside the period of stay			I	
376	Date of operation is after the date of on-carriage			I	
377	Date of operation is before the date of pre-carriage			I	
378	Date on-carriage is before arrival of pre-carriage means of transport			I	
379	Date pre-carriage is after departure of on-carriage means of transport			I	
380	Radio Call Sign or ETA and ETD have to be indicated		B	I	
381	Date/time last waste discharge invalid				W
382	Date/time of Message invalid		B	I	W
383	Date/time of vessel's last waste discharge invalid				W
384	Date/time vessel's waste discharge in port of call invalid				W
395	Party identification: not indicated/valid		B	I	W
400	Date arrival pre-carriage has to be indicated or is not valid			I	
401	Date departure on-carriage has to be indicated or is not valid			I	
402	Date arrival pre-carriage/date departure on-carriage: invalid or not indicated			I	
405	ETA main-carriage on berth invalid or not indicated		B	I	
406	ETD main-carriage on berth invalid or not indicated		B	I	
407	ETA greater than current local time (System time)		B	D	W
408	ETA main carriage in Port of call invalid or not indicated		B	D	W
409	ETA main-carriage at Berth To (Next Berth) invalid or not indicated		B		

Code Value	Code description	- may be used in reply to message:	BER MAN	IFT DGN	WAS DIS
411	ETA main-carriage greater than ETD		B	D	W
415	Notification/request submitted too early		B		
416	Notification/request submitted too late		B	I	
420	Notify party not indicated			I	
425	Number of crew on board invalid		B		
426	Number of packages not indicated			I	
427	Number of people on board invalid		B		
428	Number of pilots required invalid		B		
429	Number of towage vessel required invalid		B		
440	Overlapping vessel's call encountered		B		
450	Pilotage exemption number invalid		B		
455	Port by-laws not followed			I	
460	Port of call entry point code invalid		B		
461	Port of call exit point code invalid		B		
462	Port of discharge not indicated			I	
463	Port of loading not indicated			I	
470	Port services requested code invalid		B		
475	Previous message still pending		B	D	W
480	Request rejected by Port Authority		B	D	W
481	Requested priority for passing lock invalid		B		
482	Requested priority for passing lock issued too late		B		
483	Requested priority for passing lock not possible		B		
485	Security file number of Dangerous goods: not indicated			I	
486	Security file number of Dangerous goods: not valid			I	
487	Security level at previous port facility invalid		B		
488	Security level invalid		B		
489	Security procedures followed indicator invalid		B		
490	Security: ISSC issuing authority code invalid		B		
491	Security: ISSC issuing authority NAD details invalid or not indicated		B		
492	Security: ISSC on board code and/or Capable to execute ISPS Code indicator invalid		B		
493	Security: ISPS Code information missing		B		
505	Location identification code warehouse not valid			I	
506	Location identification, name/address warehouse not indicated			I	
520	MARPOL Annex code invalid				W
521	MARPOL Annex Subdivision code invalid				W
531	Transport license for explosives not indicated			I	
535	Service requirement code (TSR.7273) invalid		B		
540	Shipper not indicated			I	
541	Shipping line/Regular service (SCAC code) invalid or not indicated		B	I	
545	Ship's stay reference (Call reference) number invalid		B	I	
546	Ship's stay reference (Call reference) in port of call not indicated		B		
550	Type of berth not appropriate for type of vessel		B		
551	Type of call (purpose of call) at berth code invalid		B		
555	UN Number (UNDG number) invalid			I	
561	UNLOCODE Inspection place waste last invalid				W
562	UNLOCODE Place of Registry invalid		B		
563	UNLOCODE Port of call invalid		B		
565	UNLOCODE Port of call next invalid		B		

Code Value	Code description	- may be used in reply to message:	BER MAN	IFT DGN	WAS DIS
567	UNLOCODE Port of call previous invalid		B		
568	UNLOCODE Port of Delivery of waste remainder invalid				W
570	UNLOCODE Port of discharge invalid			I	
572	UNLOCODE Port of discharge of waste invalid				W
574	UNLOCODE Port of loading invalid			I	
575	UNLOCODE Port of loading pre-carriage invalid			I	
576	UNLOCODE Port of origin invalid		B		
577	UNLOCODE Port of destination invalid		B		
591	Vessel defect code invalid		B		
592	Vessel draft actual for and/or aft invalid or not indicated		B		
594	Vessel falls within boycott regime		B		
597	Vessel master name invalid or not indicated		B		
598	Vessel name invalid				
599	Vessel nationality invalid or not indicated		B	I	W
600	Equipment identification invalid (EQD versus SGP do not match)			I	
610	Vessel owner agent contact name invalid or not indicated		B		
611	Vessel owner agent NAD details invalid or not indicated		B		
613	Vessel tonnage gross invalid or not indicated (incl.unit of measure invalid or not indicated)		B		
614	Vessel deadweight invalid or not indicated (incl.unit of measure invalid or not indicated)		B		
615	Vessel length overall invalid or not indicated invalid or not indicated (incl. unit of measure invalid or not indicated)		B		
616	Vessel width maximum invalid or not indicated invalid or not indicated (incl. unit of measure invalid or not indicated)		B		
620	Vessel type code invalid		B		
630	Vessel's call canceled		B		
631	Vessel's call closed		B	I	W
635	Voyage number not indicated		B		
650	Waste collector ID invalid				W
651	Waste report exemption indication invalid or not indicated				W
652	Waste report message info code (BGM.1001) invalid				W
653	Waste specification text invalid or not appropriate				W
654	Waste volume on board invalid or not indicated (incl. unit of measure invalid or not indicated)				W
655	Waste volume storage capacity invalid or not indicated (incl. unit of measure invalid or not indicated)				W
656	Waste volume to be delivered invalid or not indicated (incl. unit of measure invalid or not indicated)				W
657	Waste volume to be generated invalid or not indicated (incl. unit of measure invalid or not indicated)				W
658	Waste volume to remain on board invalid or not indicated (incl. unit of measure invalid or not indicated)				W
